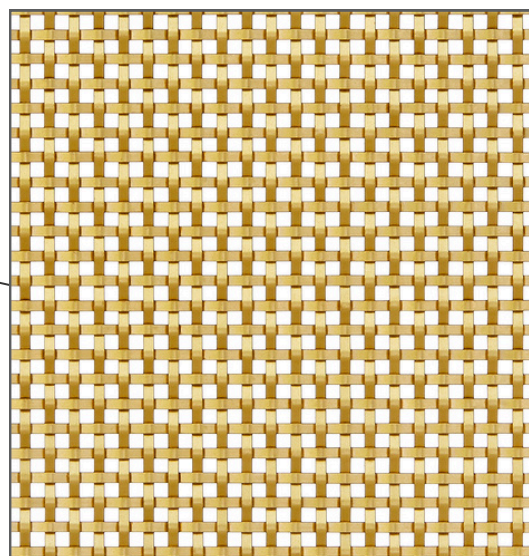




Photo provided courtesy of Palmer Todd



### Storage and Pre-Installation

Decorative Grille and Mesh should be stored in a cool, dry area with limited exposure to moisture or heat. Grille and mesh should be allowed to lay flat on a horizontal surface. If necessary, you can lay another flat object, like cardboard, with some additional weight on top of it to keep the mesh flat. Do not let grille or mesh bend or become misshapen. Keep grille/mesh in areas with low traffic to avoid potential accidents. It is best to inspect the condition of grille/mesh and then allow pieces to remain within original packaging until the time of installation. If grille or mesh becomes dirty prior to installation, using a cotton cloth should remove most debris. Simple soap and warm water can also be used - drying each wire with a cotton cloth.\*

### Maintenance

Once installed, grille and mesh can be cleaned with simple soap, warm water and a cotton cloth as needed. Always dry grille and mesh entirely after cleaning.\*

*\*Once Decorative Grille or Mesh has been stored, cleaned and/or installed by the purchaser, Brown Wood, Inc.® no longer assumes warranty over the product - meaning any separating, discoloration, installation failure, etc. are not covered by our warranty terms. Always assure condition of decorative grille and mesh as soon as it's delivered.*

