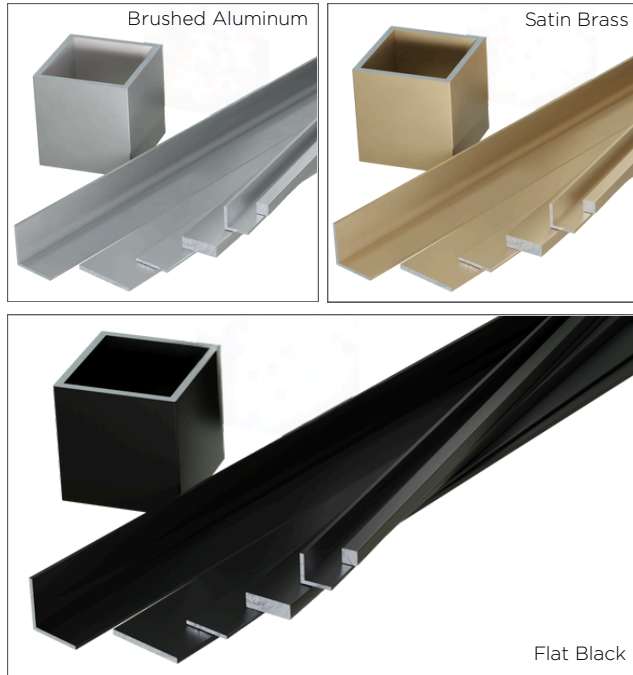


MATCHING COMPONENTS

The Designer DripEdge® is designed to seamlessly blend with our Metal Accents Collection. Whether you're incorporating Satin Brass trim or columns with Satin Brass sleeves, they will **match perfectly** with the Satin Brass DripEdge profile. Similarly, Brushed Aluminum and Flat Black options will match other Metal Accents in Brushed Aluminum and Flat Black.



DRIPEDGE SAMPLE KIT

SKU: 01DRIPEDGECLR

Includes:

- (1) 12.75" L DripEdge
- (1) Promotional Table Tent
- (1) DripEdge Color Chip Card
- (1) Snap Canvas Pouch



Cover image features Satin Brass Designer DripEdge®

Designs of distinction®
Kitchen, Bath & Home by BWI



7040 N Lawndale Ave. Lincolnwood, IL 60712
888.331.6480 • www.brownwoodinc.com/dod
info@brownwoodinc.com • @designsofdistinction_kbh

DESIGNER DRIPEDGE®

FOR WASTE CAN PULL-OUT CABINETS



Satin Brass Trim (Style #01110810-1) with Satin Brass DripEdge





Satin Brass



Flat Black



Brushed Aluminum

DESIGNER DRIPEDGE®

Our Designer DripEdge® Cabinet Door Shield is available in (2) styles, (13) sizes and in (3) finishes. Lengths range from 11.8125"L to 23.844"L, fitting most standard and full overlay cabinet door sizes and styles.

Featuring eased and finished ends, DripEdge profiles are made from 7/8" x 7/8" L-Channels that are .063" thick, designed to fit both standard and full overlay doors.

The slight overhang allows for easy clean up of spills, messes and cleaning solutions, protecting cabinets and drawers from moisture, dents and more. Suitable for residential and commercial use.

DESIGNER DRIPEDGE® FINISHES



Satin Brass
(SB)

Brushed Aluminum
(BA)

Flat Black
(WR)

For the Mudroom, Drop Zone, Kitchen & More. Wherever you need extra protection on top of doors and drawers.



Custom sizes and finishes available with a custom quote. At least 100 pc minimum. Please see our website for all 13 DripEdge sizes.

MADE IN THE USA

Made in the USA from Anodized Aluminum. Aluminum is a sustainable material; it can be recycled repeatedly without compromising the material. Anodizing is considered environmentally friendly as it does not generate hazardous waste or EPA-listed toxins.

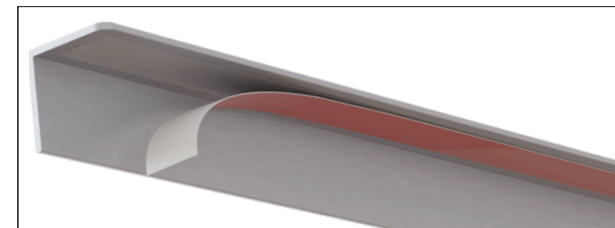
Each profile comes with UHB (ultra-high bond) tape on (1) inside face. Simply remove the plastic backer, clean the surface of the cabinet and press your DripEdge profile onto the door. We recommend the tape side be placed on top of the door.

Square Edges

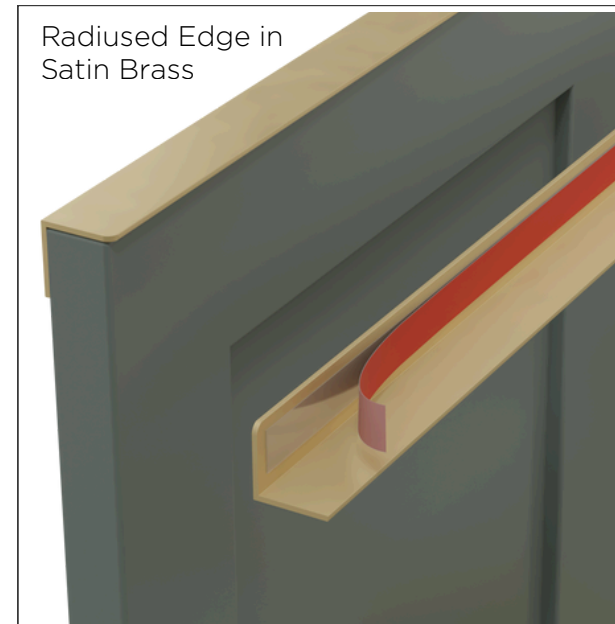
*Available While Supplies Last!
Radiused DripEdge profiles are replacing square-edge profiles.*



Radiused Edges



Radiused Edge in Satin Brass



DESIGNER DRIPEDGE®

FOR WASTE CAN PULL-OUT CABINETS



Designs of distinction®
Kitchen, Bath & Home
by BWI



Satin Brass



Flat Black



Brushed Aluminum

DESIGNER DRIPEDGE®

Our Designer DripEdge® Cabinet Door Shield is available in (2) styles, (13) sizes and in (3) finishes. Lengths range from 11.8125"L to 23.844"L, fitting most standard and full overlay cabinet door sizes and styles.

Featuring eased and finished ends, DripEdge profiles are made from 7/8" x 7/8" L-Channels that are .063" thick, designed to fit both standard and full overlay doors.

The slight overhang allows for easy clean up of spills, messes and cleaning solutions, protecting cabinets and drawers from moisture, dents and more. Suitable for residential and commercial use.

DESIGNER DRIPEDGE® FINISHES



Satin Brass
(SB)



Brushed Aluminum
(BA)



Flat Black
(WR)

For the Mudroom, DropZone, Kitchen & More. Wherever you need extra protection on top of cabinet doors.



Custom sizes and finishes available with a custom quote. At least 100 pc minimum. Please see our website for all 13 DripEdge sizes.

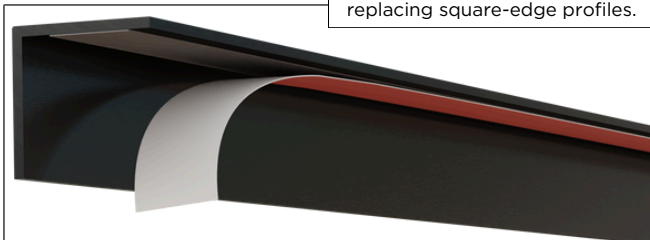
MADE IN THE USA

Made in the USA from Anodized Aluminum. Aluminum is a sustainable material; it can be recycled repeatedly without compromising the material. Anodizing is considered environmentally friendly as it does not generate hazardous waste or EPA-listed toxins.

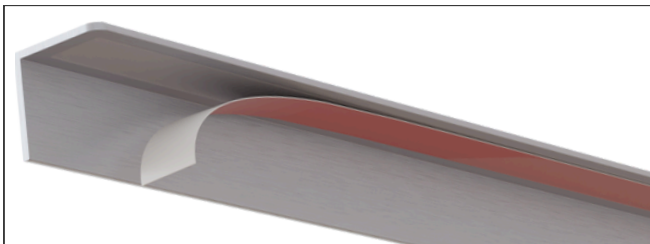
Each profile comes with UHB (ultra-high bond) tape on (1) inside face. Simply remove the plastic backer, clean the surface of the cabinet and press your DripEdge profile onto the door. We recommend the tape side be placed on top of the door.

Square Edges

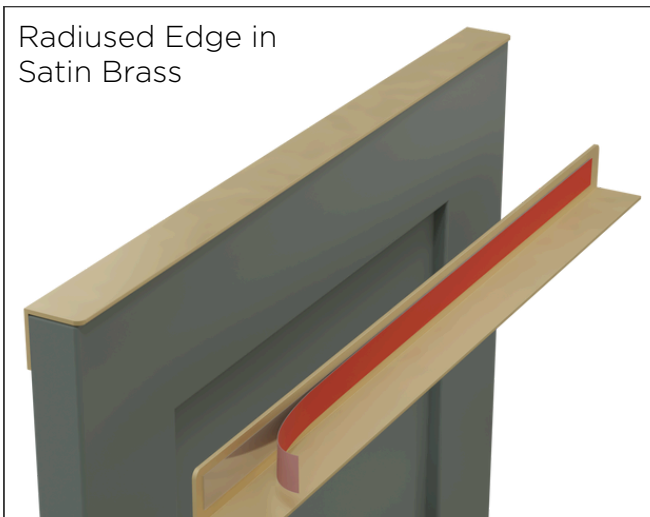
Available While Supplies Last!
Radiused DripEdge profiles are replacing square-edge profiles.



Radiused Edges



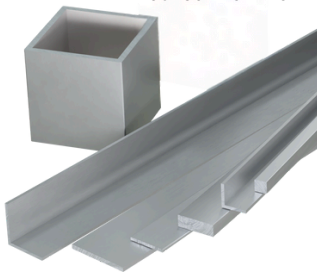
Radiused Edge in Satin Brass



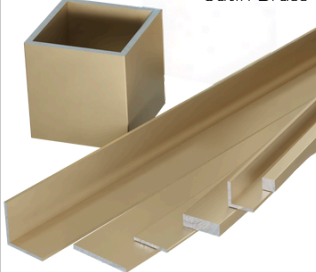
MATCHING COMPONENTS

The Designer DripEdge® is designed to seamlessly blend with our Metal Accents Collection. Whether you're incorporating Satin Brass trim or columns with Satin Brass sleeves, they will **match perfectly** with the Satin Brass DripEdge profile. Similarly, Brushed Aluminum and Flat Black options will match other Metal Accents in Brushed Aluminum and Flat Black.

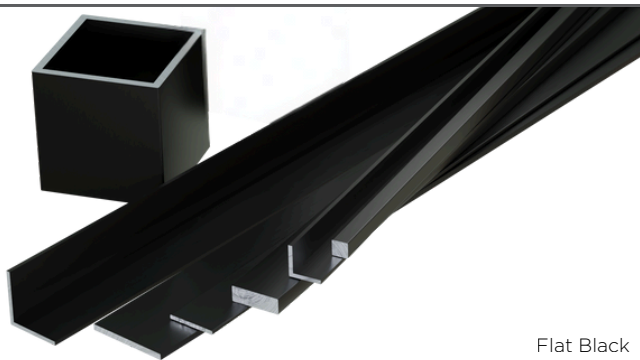
Brushed Aluminum



Satin Brass



Flat Black



Satin Brass Trim (Style #0110810-1)
with Satin Brass DripEdge

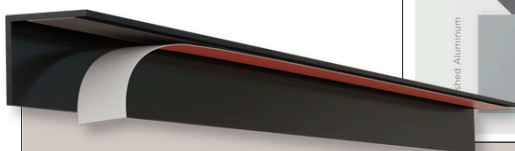
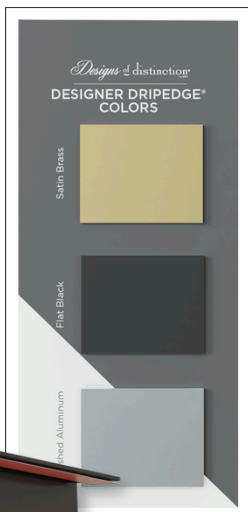


DRIPEDGE SAMPLE KIT

SKU: 01DRIPEDGECLR

Includes:

- (1) 12.75"L DripEdge
- (1) Promotional Table Tent
- (1) DripEdge Color Chip Card
- (1) Snap canvas pouch



Designs of distinction[®]
Kitchen, Bath & Home
by BWI



7040 N Lawndale Ave. Lincolnwood, IL 60712
888.331.6480 • www.brownwoodinc.com/dod
info@brownwoodinc.com • [@designsofdistinction_kbh](https://www.instagram.com/designsofdistinction_kbh)