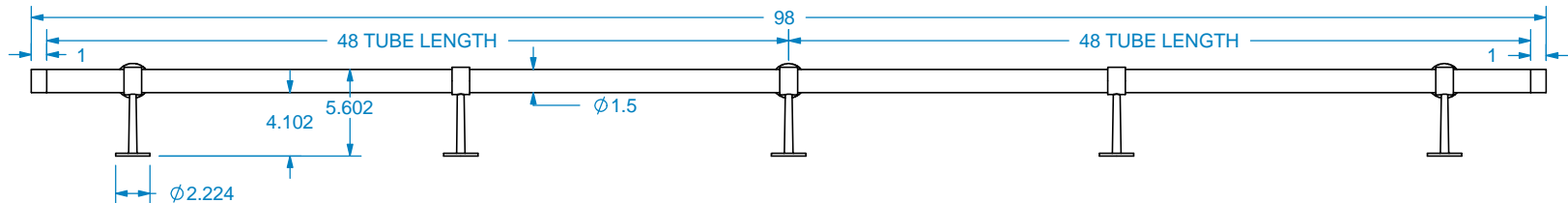
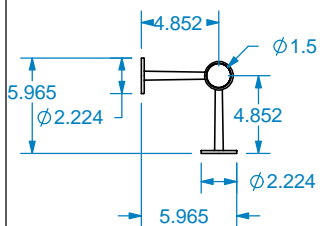
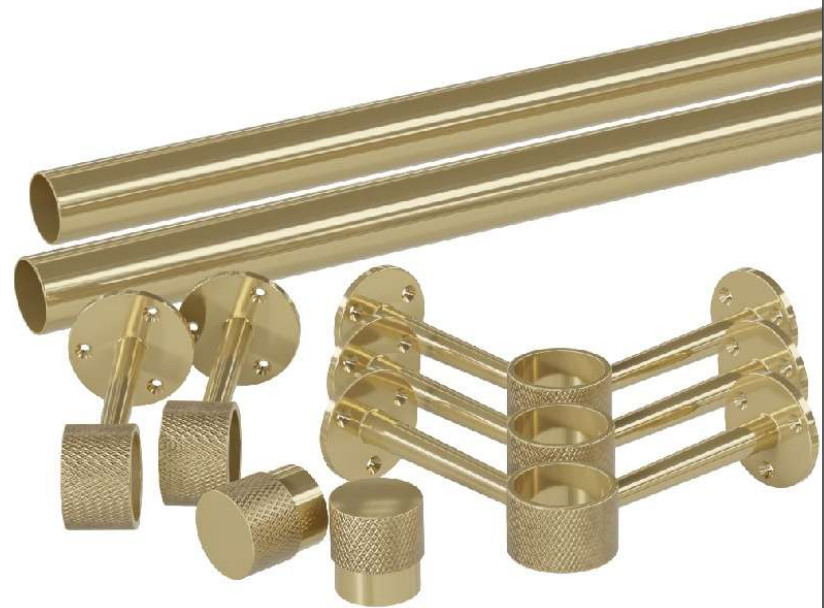




**INCLUDED IN THE 8' KNURLED FOOT RAIL KIT:**

- 2) 1 1/2" X 48" # 01TUBE15-1-48
- 3) KNURLED FLOOR POSTS - # 01KFRANGL-1
- 2) KNURLED CENTER POSTS - # 01KFRPOST-1
- 2) KNURLED END CAPS - # 01KCAP15-1

**OPTIONAL CORNER CONNECTOR ADD-ON SOLD SEPARATELY - # 01474150-1**



REVISION HISTORY		
REV	REV DATE	DESCRIPTION

TOLERANCES	
WIDTH	± .03125"
THICKNESS	± .03125"
LENGTH	± .0625"
ANGULAR	± x.x°
PROFILE	± x.xxx"
Use General Tolerances Unless Noted	

MATERIALS AND FINISHES	
PLEASE VISIT OUR WEBSITE FOR A COMPLETE LIST. <a href="http://www.brownwoodinc.com">www.brownwoodinc.com</a> 1-800-328-5858	
NOTES:	
Do not scale. Use dimensions only. All dimensions are in inches unless noted	

TITLE: 8' KNURLED FOOT RAIL KIT	
NOMINAL SIZE 6" X 6" X 98"	
DWG #: 01KFOTRL1-1-96	REV:
DATE: 10/22/2025	SCALE: 1:12