

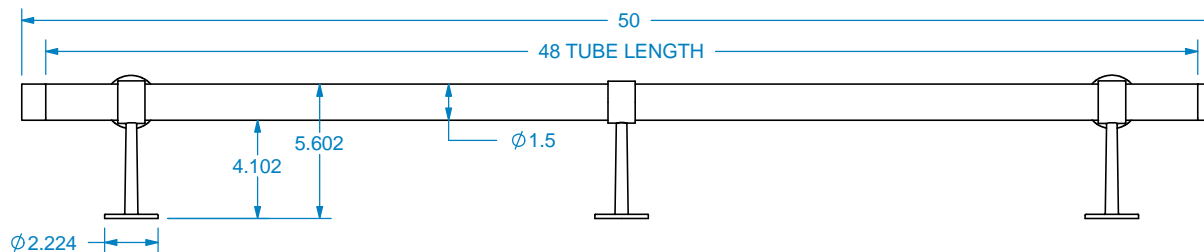
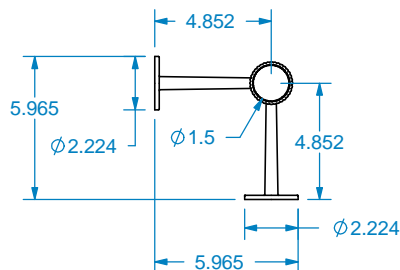


INCLUDED IN THE 4' KNURLED FOOT RAIL KIT:

- 1) 1 1/2" X 48" TUBE # 01TUBE15-1-48
- 2) KNURLED FLOOR POSTS - # 01KFRANGL-1
- 1) KNURLED CENTER POSTS - # 01KFRPOST-1
- 2) KNURLED END CAPS - # 01KCAP15-1



OPTIONAL CORNER CONNECTOR ADD-ON SOLD SEPARATELY - # 01474150-1



| REVISION HISTORY | | |
|------------------|----------|-------------|
| REV | REV DATE | DESCRIPTION |
| | | |
| | | |
| | | |

| TOLERANCES | |
|-------------------------------------|-----------|
| WIDTH | ± .03125" |
| THICKNESS | ± .03125" |
| LENGTH | ± .0625" |
| ANGULAR | ± x.x° |
| PROFILE | ± x.xxx" |
| Use General Tolerances Unless Noted | |

| MATERIALS AND FINISHES | |
|--|--|
| PLEASE VISIT OUR WEBSITE FOR A COMPLETE LIST. www.brownwoodinc.com 1-800-328-5858 | |
| NOTES: | |
| Do not scale. Use dimensions only. All dimensions are in inches unless noted | |

| | |
|---------------------------------|------------|
| TITLE: 4' KNURLED FOOT RAIL KIT | |
| MFG | |
| NOMINAL SIZE 6" X 6" X 50" | |
| DWG #: 01KFOTRL1-1-48 | REV: |
| DATE: 10/22/2025 | SCALE: 1:8 |